



RIFLESSI/REFLEX

Collection

STAR - CROSS - STRIPE - SEVENTY
Base art. Thema

PUNZONATURA
Applicazione di lamina a disegno su mezze pelli in continuo (senza sormonta), con possibilità di scelta sia del colore della pelle sia del colore della lamina.

Misura media 2.20/2.50 mq. (mezze pelli)
Tempi consegna: 3 settimane circa

STAR - CROSS - STRIPE - SEVENTY
Art. Thema

PUNCHING
Application in continue (without overlap) of the lamina on design, on half hide, with the possibility of choice of both skin color and lamina color.

Average size 2.20/2.50 sqm.
Delivery time: 3 weeks around

Applicazioni / Applications



Sofa



Leather goods



Hospitality



Yachting



Automotive



RIFLESSI/REFLEX

Collection

HALF - HOLE 2 - HOLE 5 - HOLE PRINT

Base art. Thema

MICROFORATURA

Consiste in una lavorazione che attraverso una macchina foratrice punzona in maniera regolare la pelle imprimendo il foro desiderato in varie misure.

Misura media 2.20/2.50 mq. (mezze pelli)

Tempi consegna: 3 settimane circa

HALF - HOLE 2 - HOLE 5 - HOLE PRINT

Art. Thema

MICROHOLE

It consists in a processing, that through a drilling machine, punches on a regular basis the leather, impressed the desired hole, in different sizes.

Average size 2.20/2.50 sqm.

Delivery time: 3 weeks around

Applicazioni / Applications



Sofa



Leather goods



Hospitality



Yachting



Automotive

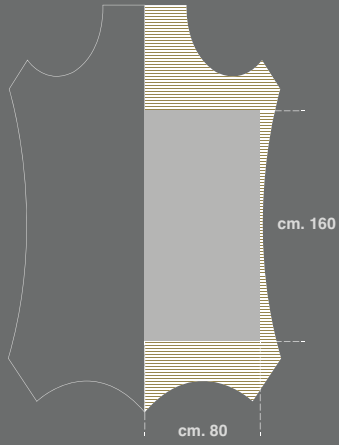


RIFLESSI/REFLEX

Collection

Bovini / Bovine leather

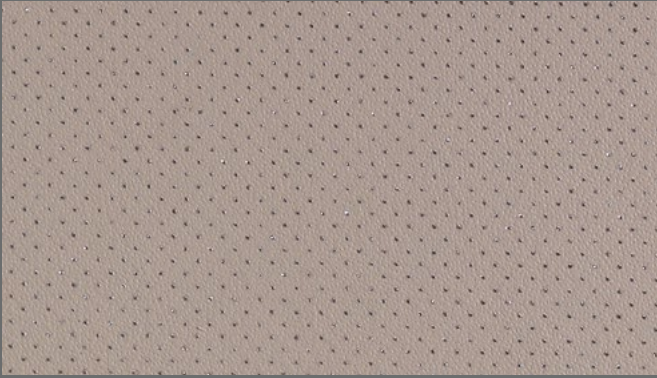
Riflessi/Reflex



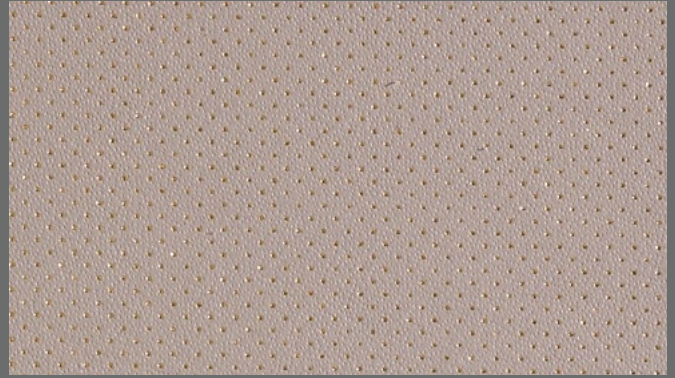


RIFLESSI/REFLEX

Collection



STARS
col. **SILVER**



STARS
col. **GOLD**



CROSS
col. **SILVER**



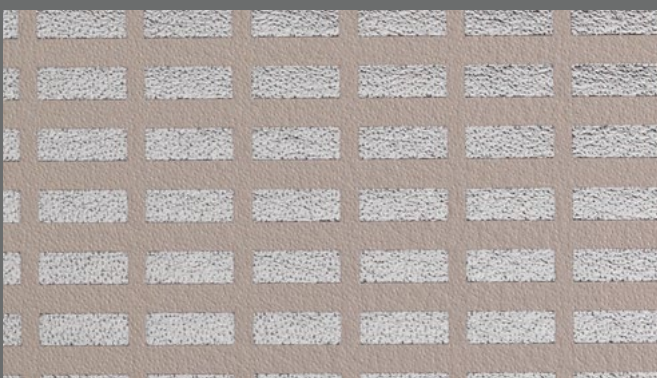
CROSS
col. **GOLD**



STRIPE
col. **SILVER**



STRIPE
col. **GOLD**



SEVENTY
col. **SILVER**

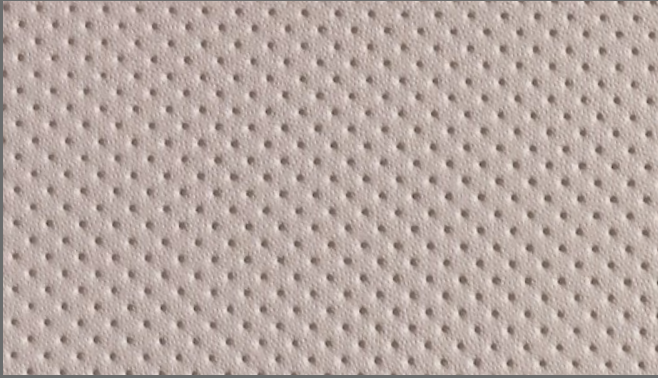


SEVENTY
col. **GOLD**



RIFLESSI/REFLEX

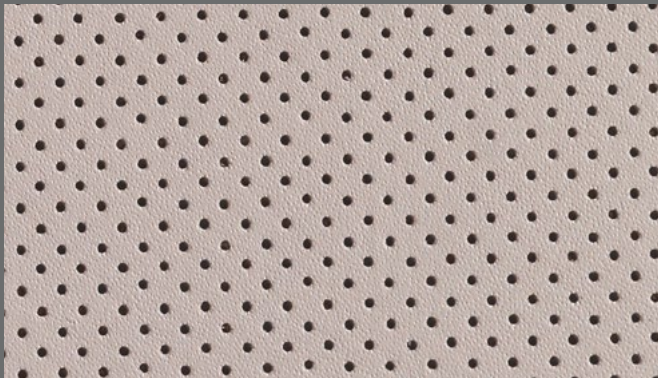
Collection



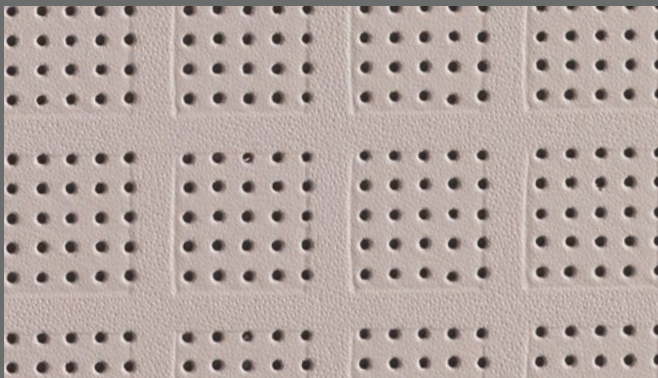
HALF



HOLE 2



HOLE 5



HOLE PRINT